




**Editors and Editorial Board Members:Trends in Clinical Research:
Open Access**

	<p>Anita Roselyn Peoples Assistant Professor Departments of Surgery & Radiation Oncology James P. Wilmot Cancer Center University of Rochester Medical Center USA</p>
--	--

	<p>Azam Bolhassani Associate Professor Department of Hepatitis and AIDS Pasteur Institute of Iran Tehran, Iran</p>
---	---

	<p>Christiane Pavani Professor Universidade Nove de Julho Brazil</p>
---	---



Cristina Ana Maria Capatina

Assistant Professor

Carol Davila University of Medicine and Pharmacy

Romania



Hsiu-Chuan Chou

Associate Professor

Department of Applied Science

National Hsinchu University of Education

Taiwan



João Rodrigo Mesquita

Assistant Professor

Polytechnic Institute of Viseu

Agrarian Superior School

Research Center for Biodiversity and Genetic Resources

University of Porto

Portugal



Doh Kwan Kim

Professor

Department of Psychiatry

Samsung Medical Center

Sungkyunkwan University School of Medicine

Republic of Korea



Joey SW Kwong

Associate Professor

Executive Associate Director

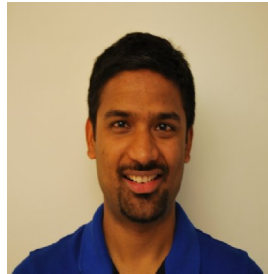
Chinese Cochrane Center

Chinese Evidence-Based Medicine Center

West China Hospital

Sichuan University

China



Mansher Singh

Department of Surgery

Brigham & Women's Hospital

Division of Plastic Surgery

Harvard Medical School

USA



Oueslati Sabrina

Children's Hospital Bechir Hamza

Tunisia



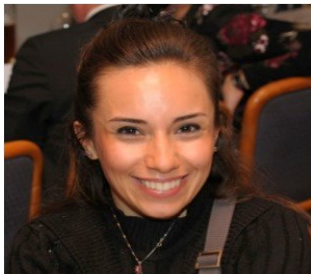
Pier Vitale Nuzzo

Department of Internal Medicine
School of Medicine
University of Genoa
Italy



Renke Zhou

Dan L. Duncan Cancer Center
Baylor College of Medicine
USA



Sahba Mobini

Biomedical Engineer
School of Materials
The University of Manchester
UK



Sun-Hee Leem

Professor
Laboratory of Functional Genomics
Department of Biological Science
Dong-A University
Korea



Victoria Elizabeth Rhodes Parker

SPR (ST7) Diabetes and Endocrinology

Hospitals NHS Trust

Cambridge University

UK



Yu Sun

Laboratory of Cancer Resistance

Institute of Health Sciences (IHS),

Shanghai Institutes for Biological Sciences (SIBS)

Chinese Academy of Sciences (CAS)

Shanghai Jiaotong University School of Medicine (SJTUSM)

PR China



Yulin Li

Associate Professor

Engineering Research Centre for Biomedical Materials

Ministry of Education

East China University of Science and Technology

Shanghai, PR China

Please Submit your Manuscript to Cresco Online Publishing

<http://crescopublications.org/submitmanuscript.php>